



KITCHENS FOR SMALL SPACES

john strand
creating space

with compact**living**solutions style

John Strand MK has been the leading supplier of mini-kitchens to the property industry for 30 years. Our products range from 1000mm durable steel units to more exclusive units with dishwashers and washer/dryers available in a variety of laminate and wood effect finishes.

The kitchens we supply all require minimal assembly*, just connection to the water feed and 13amp plugs for electrical services, saving valuable time and expense on installation; ideally suited to use within home offices, staff rooms, hotels, self-catering accommodation, prefabricated units and student accommodation.

In addition to kitchens, we offer other space saving furnishings such as coffee tables that convert into dining tables, desks, wall beds, desk beds and sofa beds.

In order to meet the high standards demanded by all of our clients, products must adhere to our selection criteria and offer:

- high quality
- create space
- versatility
- ease of installation
- compliance with all relevant EU health and safety regulations

Our professional, experienced and friendly customer support team are here to help you with your sales, technical and aftersales enquiries.

** Certain kitchens may require some assembly and where applicable this will be stated.*

John Strand Contracts

John Strand MK has been fulfilling a wide range of commercial contracts since 1997. Working with architects, designers and contractors we specialise in offering contemporary kitchens for use within student accommodation, hotels, retirement homes, pods and developments of studio apartments.

We offer a full project management service from design to delivery. At every step of the process we provide expert advice and support. Our showroom contains kitchen displays which allow clients to visualise products alongside their plans and we can supply kitchens for 'mock up' rooms to assist the decision making process involved when supplying for multiple unit developments. In addition to kitchens we are experienced in delivering complete room solutions; sourcing and supplying complementary furnishings.

Technical drawings can be supplied for all of our products and because we have UK based cabinet makers we can provide a multitude of kitchen sizes and finishes to your specification.

Please send your drawings (preferably as PDF) with a summary of your requirements to: enquiry@johnstrand-mk.co.uk.



Some of our clients have included:

American Embassy, London	Roedean School
Balfour Beatty	Royal Yachting Association
City West Homes	Sir Robert McAlpine
Cowlin Construction	Stride Treglown
Galliard Homes	Thames Valley Police
INTO	The Abbeyfield Society
Jewson	Travis Perkins
Kier Group	Unite Group
Loates – Taylor Shannon Architect	University of Exeter
London Borough of Camden	Vinci Construction
Lords Cricket Ground	West Beach Hotel, Brighton
Mansell Construction	YMCA
Portakabin	

contents

kitchens for small spaces

	THE FAMOUS JOHN STRAND MINI-KITCHENS	4 – 6
	EYE LEVEL MICRO KITCHENS	7
	KITCHENETTE & GALLEY KITCHENS	8 – 9
	OVEN COMBI KITCHENS	10
	DESIGNER RANGE KITCHENS	11 – 13
	HIDEAWAY MINI-KITCHENS	14 – 17
	FINISHES FOR HIDEAWAY & DESIGNER KITCHENS	18
	TAPS & ACCESSORIES	19
	ITALIAN HIDEAWAYS	20 – 22
	ITALIAN CONTEMPORARY KITCHENS	23 – 25
	KITCHOO & FOLDING TABLES	26
	Please refer to our separate brochure for further designs	
	SMART BEDS	27
	Please refer to our separate brochure for further Wallbed designs	

All information contained within this brochure is correct at the time of print but may be subject to change. Please see our Terms of Trade for full details of terms and conditions.

call 02089306006



mini-kitchen

The famous John Strand Mini-Kitchen is just one metre wide and ideal where space is at a premium. Manufactured by Electrolux, the unit is constructed of steel, making it robust, practical and extremely durable.

It simply requires connection to a 13 amp power supply, waste and water services.

MK11L

1000W x 600D x 900H

Safety feature

All mini-kitchens feature a 60 minute auto cut-out safety timer. Hotplates will only function when the timer is activated

MK17R

without hotplates



MK11 & MK17

- Supplied fully assembled
- Steel constructed cabinet
- White powder coated finish
- Stainless steel sink top – left or right hand bowl available
- 2 electric hotplates with safety timer (MK11 only)
- 98 litre refrigerator with 4 star freezer compartment
- Under sink storage cupboard
- Complete with waste, trap & overflow fittings
- Taps not included (see page 19)
- MK11 requires 2 No. power points
- MK17 requires 1 No. power point



1000W x 600D x 900H

 **Electrolux**



compact**living**solutions

mini-kitchen with microwave

call 02089306006



4 star freezer compartment

MK12L

1000W x 600D x 900H



MK18R

without hotplates



1000W x 600D x 900H

MK12 & MK18

- Supplied fully assembled
- Steel constructed cabinet
- White powder coated finish
- Stainless steel sink top – left or right hand bowl available
- 2 electric hotplates with safety timer (MK12 only)
- 98 litre refrigerator with 4 star freezer compartment
- 700 watt compact microwave
- Complete with waste, trap & overflow fittings
- Taps not included (see page 19)
- MK12 requires 3 No. power points
- MK18 requires 2 No. power points



mini-kitchen

with microwave + pan drawer



MK19DR

1000W x 600D x 900H

 **Electrolux**

Wooden chopping board
accessory



MK20D has a stainless steel preparation area instead of the hotplates on the MK19D



Large pan drawer

MK19D & MK20D

- Supplied fully assembled
- Steel constructed cabinet
- White powder coated finish
- Stainless steel sink top – left or right hand bowl available
- 2 electric hotplates with safety timer (MK19D only)
- 98 litre refrigerator with 4 star freezer compartment
- 700 watt compact microwave
- Large pan drawer
- Complete with waste, trap & overflow fittings
- Taps not included (see page 19)
- MK19D requires 3 No. power points
- MK20D requires 2 No. power points



compact**living**solutions

eye level micro kitchens

ELK11 & ELK17

kitchenette

- All units supplied assembled
- Steel constructed Mini-Kitchen base
- Wall units in white melamine finish
- Stainless steel sink top – left or right hand bowl available
- 2 electric hotplates with safety timer (ELK11 only)
- 98 litre refrigerator with 4 star freezer compartment
- 700 watt compact microwave
- Under sink storage cupboard
- Complete with waste, trap and overflow fittings
- Taps not included (see page 19)
- Brushed aluminum laminate backboard not included (see page 18)



ELK17R

1000W x 600D x 2000H
without hotplates

ELG11L

1500W x 600D x 2000H



galley kitchen

ELG11 & ELG17

Same specification as the Kitchenette but with the addition of 500mm wide wall & base units for more storage and a 30mm postformed laminate worktop which provides a functional and solid preparation area.

- Stainless steel backboard not included (see page 18)
- Kitchens with hotplates require 3 No. power points
- Kitchens without hotplates require 2 No. power points

call 02089306006



kitchenette



KMK11L

1000W x 600D x 2000H

Model options

- KMK11 with hotplates
- KMK12 with hotplates and microwave
- KMK19D with hotplates, microwave & pan drawer
- KMK17 without hotplates
- KMK18 without hotplates, with microwave
- KMK20D without hotplates, with microwave & pan drawer
- BB10 1000W x 530H
laminate backboard available as an optional extra (see page 18)
- Taps not included (see page 19)

All kitchenettes include

- 1000W x 300D x 570H wall unit

O P T I O



galley kitchen



a range of different tap styles are available

GMK12L

1500W x 600D x 2000H

All galley kitchens include

- 1000W x 300D x 570H wall unit
- 500W x 300D x 570H wall unit
- 500W x 600D x 870H base unit
- 30mm postformed laminate worktop



call 02089306006

N

S

with microwave



with microwave and pan drawer



Model options

- GMK11 with hotplates
- GMK12 with hotplates and microwave
- GMK19D with hotplates, microwave & pan drawer
- GMK17 without hotplates
- GMK18 without hotplates, with microwave
- GMK20D without hotplates, with microwave & pan drawer
- BB15 1500W x 530H laminate backboard available as an optional extra (see page 18)
- Taps not included (see page 19)



ovencombi kitchen

The Oven Combi Kitchen has all the functions and benefits of our mini-kitchen range with added storage space, work surface area and a versatile built-in combination microwave, grill and convection oven that offers a full range of cooking options.

OCMK2R

1600W x 600D x 2000H

Safety feature

All mini-kitchens feature a 60 minute auto cut-out safety timer. Hotplates will only function when the timer is activated



OCMK1R 1600W x 600D x 900H without wall units

OCMK1 & OCMK2

- All units supplied assembled
- Steel constructed MK11 mini-kitchen base (see page 4)
- 600mm Oven Housing base unit in white melamine
- Cutlery drawer
- 30mm postformed laminate worktop
- Combination built in microwave with:
Microwave oven – 900 watts
Quartz Grill – 1850 watts
Convection oven – 40-250 c
- 600mm & 1000mm Wall units in white melamine (OCMK2 only)
- BB16 Backboard not included (see page 18)
- Taps not included (see page 19)
- Requires 3 No. power points



designer range ovencombi

The Designer Range Kitchens are a stylish alternative to our other mini-kitchens. They can be specified in a wide range of door finishes, worktops and backboards which can completely alter the look of each kitchen to suit all types of interior schemes.

DOC041L

1600W x 600D x 2000H

 **Electrolux**

cherry finish (group 2)
see page 18 for further finishes



This Oven Combi Kitchen has been designed with cherry laminate doors, a granite effect worktop and brushed aluminum laminate backboard.

All of the base and wall units are supplied assembled, saving on both time and the cost of installation.

The appliances include a 2 plate electric hob with safety timer, an integrated 70 litre refrigerator with ice-box and a combination microwave with grill and convection oven.

call 02089306006





designer range kitchenette

oak finish (group 2)
see page 18 for
further finishes



There are many options that can be specified with the Designer Range including one, two or no hotplates, 70 litre or 85 litre integrated fridges and a choice of microwave finishes and functions.

This Kitchenette has oak laminate doors on a white carcass, a 70 litre integrated refrigerator, storage under the sink, a drawer below the stainless steel preparation area and wall unit above.



DKO43R

1000W x 600D x 2000H

O P T I O



2 hotplates



1 hotplate



no hotplates

designer range galley

DGMO21L

1500W x 600D x 2000H
Matt black laminate doors
(group 2) see page 18
for further finishes

call 02089306006



This sleek looking Galley Kitchen has been fitted with matt black laminate doors, stainless steel handles, worktop and backboard.

There is a stainless steel microwave to complement the design and the kitchen also includes 2 electric hotplates with a safety timer and a 85 litre integrated refrigerator with ice-box.

N

S



microwave



85 ltr fridge or 70 ltr fridge with drawer





hideaway mini-kitchen

These mini-kitchens are particularly suitable for 'one room living' areas, where the kitchen is hidden from view and can be used to co-ordinate with other items of furniture situated in the same environment. They are available in a wide range of laminate finishes (see page 18)



The Hideaway mini-kitchen can be enlarged by the addition of the LSK60 tall storage unit (available in 3 sizes)
The compact dishwasher can also be fitted in this unit (see page 19)



HA05L + LSK60L
1600W x 620D x 2100H



HA05L
1000W x 620D x 2100H
Beech laminate doors (group 2)

- Base and top units supplied assembled
- White laminate cabinet construction
- Choice of laminate doors
- Stainless steel sink top
- 2 electric hotplates with safety timer
- 85 litre integrated refrigerator with ice-box
- Top unit with shelving
- 700 watt compact microwave
- Interior light, timer & power point
- Complete with waste, trap & overflow fittings
- Taps not included (page 19)
- Requires 4 No. power points

Other models

- Available with one or no hotplates
- 70 litre refrigerator with drawer above
- Tall finished end panel
- Stainless steel splashback
- Other microwave models



hideaway models without hotplates mini-kitchen

call 02089306006



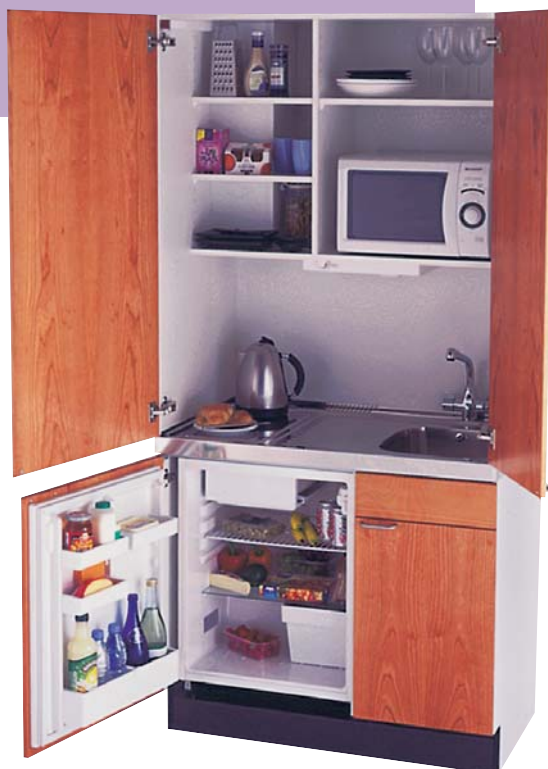
HA04L

1200W x 620D x 2100H
White laminate doors
(group 1)



HA03R

1000W x 620D x 2100H
Cherry laminate doors
(group 2)



HA03 & HA04

- Base and top units supplied assembled
- White laminate cabinet construction
- Choice of laminate doors
- Stainless steel sink & preparation area
- 85 litre integrated refrigerator with ice-box
- Top unit with shelving
- 700 watt compact microwave
- Interior light, timer and power point
- Complete with waste, trap & overflow fittings
- Requires 3 No. power points
- Taps not included (see page 19)

Other models

- Available with one or two hotplates
- 70 litre refrigerator with drawer above
- Tall finished end panel
- Stainless steel splashback
- Other microwave models



hideaway mini-kitchen

HA06L / Ceramic

1200W x 620D x 2100H

Stainless steel effect laminate doors (group 2)



Safety feature

The hideaway mini-kitchen is fitted with a cut-out switch to the hotplates which is activated when the top doors are closed.



HA06

- Base and top units supplied assembled
- White laminate cabinet construction
- Choice of laminate doors
- 1 1/2 bowl Stainless steel sink
- 85 litre integrated refrigerator with ice-box
- Top unit with shelving & microwave
- 700 watt compact microwave
- Interior light, timer & power point
- Complete with waste, trap and overflow fittings
- Requires 4 No. power points
- Taps not included (see page 19)

Optional items included as shown

- Ceramic hob with safety timer
- Stainless steel splashback
- Stainless steel combination microwave with grill and convection oven
- Tall side panels in matching stainless steel effect laminate

 **Electrolux**



hideaway mini-kitchen



HA015L

600W x 620D x 2100H
Birch laminate doors
(group 2)

Optional items included as shown

- Birch laminate carcass on interior and exterior sides
- Sharp R26ST Stainless steel compact microwave oven (see page 19)



HA015

- Base and top units supplied assembled
- White laminate cabinet construction
- Choice of laminate doors
- Stainless steel sink top with one hotplate and safety timer
- Left or right hand hinged door
- 70 litre refrigerator with ice-box
- Drawer above fridge
- Top unit with shelving and microwave
- 700 watt compact microwave
- Interior light, timer and power point
- Complete with waste, trap and overflow fittings
- Requires 4 No. power points
- Taps not included (see page 19)

call 02089306006

johnstrand

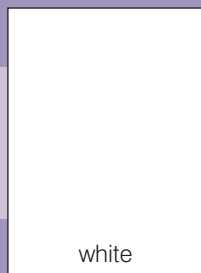




finishes for hideaway and designer kitchens

laminate doors

group 1



white

group 2



beech



oak



birch

group 3



black



cream



white

glossy
finish

group 2



white ash



red alder



swiss pear



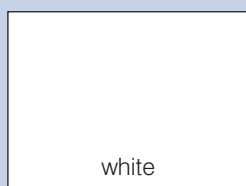
cherry



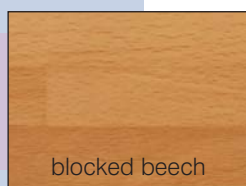
stainless steel
effect

* More laminate finishes available on request

WORKTOPS for designer kitchens



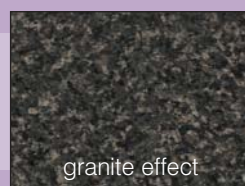
white



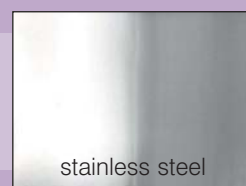
blocked beech



brushed aluminium
effect



granite effect

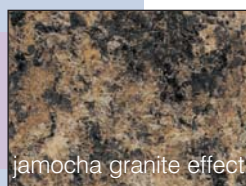


stainless steel

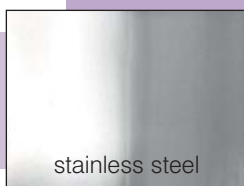
BACKBOARDS for kitchenettes, galley and oven combi kitchens



brushed aluminium
effect



jamocho granite effect



stainless steel

Colour reproduction: We take great care in the photography of products illustrated in this brochure. Due to the variables in the photographic and printing processes, colours may vary from the actual product.

taps & accessories



DCM104



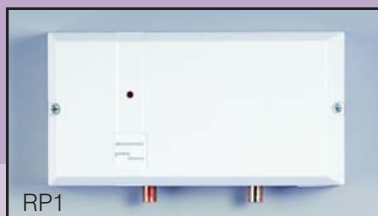
CRU



DLT104



SL5/CH



RP1

Under sink instantaneous water heater



BP1

under sink instant boiling water unit & tap



WHVT

water heater with vented tap

under sink water heater



PBW

over sink instant boiling water unit



CWM

compact washing machine and dishwasher



CDW



chopping board



R27STM

stainless steel compact microwave



CM579S

stainless steel combination microwave (also available in a white finish)

microwave options
(not available for mini kitchens on pages 5, 6, 8 and 9)





italian hideaways

recirculating
or ducted
extractor



integrated
refrigerator



Hideaway with
integrated
dishwasher
option
(Bin not
included)



ITH580 1706W x 602D x 1980H



Living in style

These Hideaway units are manufactured in Italy with the emphasis on contemporary design and superb finishing.

The units are self-contained with a clever use of bi-fold doors, which enclose a fully fitted kitchen within a very small space.

The kitchen is fitted with a stainless steel sink top, rear and side upstands and can be specified with a 2 or 4 plate electric hob. (gas option not available)



ITH570 1706W x 602D x 1980H

Whatever finish you choose, the doors, carcass, side panels and backboard will all be matching.

An integrated fridge and extractor fan are always included and on the wider Hideaways there is an option of a 45cm multi-function oven or integrated dishwasher.

The halogen lights and utensil rail are optional extras.

The Kitchen can also be specified without hotplates and can be reconfigured to include either a standard or combination microwave oven.





italian hideaways

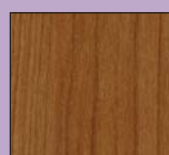
laminates
finishes



white



birch



cherry



white oak



grey oak

Optional items

- 45 cm multi-function oven
- 45 cm integrated dishwasher
- 45 cm storage cupboard
- Microwave for upper shelf unit
- Utensil bar and accessories
- Strip for electrical sockets
- Halogen lights



Italian Hideaway

- Widths 1256 mm or 1706 mm
- 5 laminate finishes
- Matching carcass, backboard and doors
- Stainless steel sink top – left or right hand bowl available
- Sink cupboard with internal drawer
- Single lever monobloc tap
- Waste, trap & overflow fittings
- Bi-fold doors (locks available on request)
- Plate rack/drainers
- 2 or 4 plate electric hob
- Integrated refrigerator
- Recirculating or ducted extractor

ITH320 1256W x 602D x 1980H

italian contemporary kitchens

call 02089306006



ITK2 2400W x 600D x 2190H
aluminium trim handle shown
at additional cost



ITK1 1800W x 600D x 2430H

These kitchens have been designed to incorporate all the essential functions of fully fitted kitchens and planned in such a way to maximise whatever limited space maybe available.

There are three standard layouts measuring from 1800mm to 2400mm wide.

As an example, the storage capacity in the 1800mm wide kitchen has been increased by the use of 960mm high wall units, thereby utilising all the space between the floor and ceiling.

You can choose to order one of these three layouts or alternatively contact us to discuss your own ideas and let us create a superb looking kitchen which will enhance the appearance and value of your property.



johnstrand



italian contemporary kitchens



4 plate electric hob



horizontal design stripe on fascia, only available in white and corda finishes



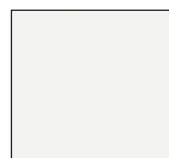
drawer cabinet



over sink wall unit with plate rack and drainer



dove grey



white



corda



tangerine



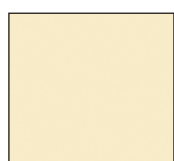
lime



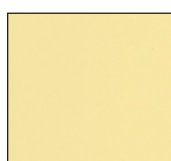
cherry



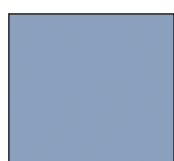
ITK3 2400W x 600D x 2190H



ivory



yellow



blue grey



blue

laminate finishes

Italian design with choice

There are 10 door finishes to choose from, giving an extraordinary choice of colours and combinations.

This range offers the specifier great flexibility as this multisystem includes 56 different frames and a full range of quality appliances and accessories.



johnstrand



kitchoo



reddot design award

Kitchoo marry high quality materials and sublime design to produce an inventive and award winning range of exclusive kitchens ideal for luxury interiors.

Pictured, Kitchoo K1 is an innovative kitchen, which can be integrated into a room occupying only a minimum of space. The unobtrusive frame conceals an induction hob, a sink, telescopic tap, refrigerator, drawers and if needed a dishwasher and an extractor hood.

Further details and prices available upon request.



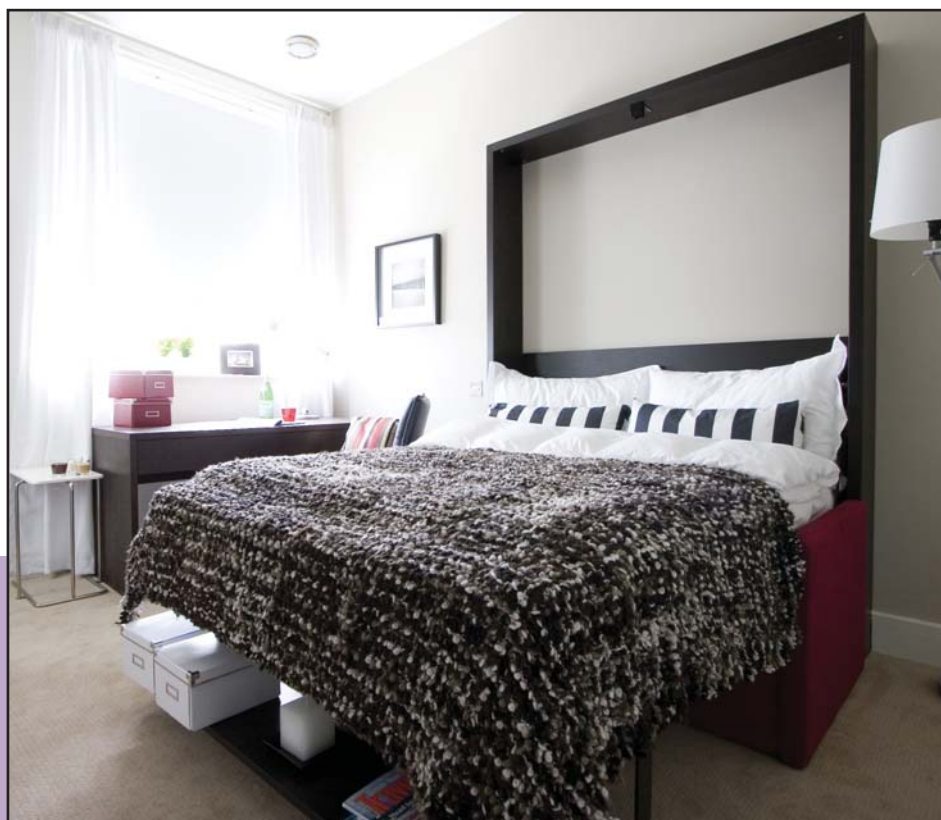
folding tables



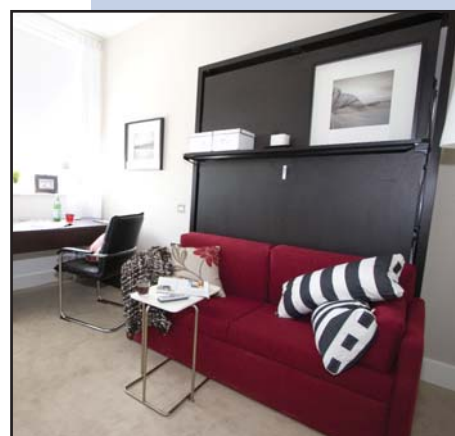
FOLDING TABLES

Where space is at a premium John Strand present the Convertables. This beautiful range of tables are designed and manufactured in Italy. They transform small coffee tables in to full height dining tables or desks. Easy to use, compact and ConverTable!

Full table brochure available upon request.



DILE Double wallbed which opens down over a fixed 2 seater sofa



Dotto double deskbed



SMART BEDS

The Smartbed range of more than 25 space saving solutions includes wallbeds with shelves, sofa, table, desks and storage units.

The range is available with a choice of melamine frame finishes and fabric colours.

These wallbeds are manufactured in Italy and combine style and durability which makes them a perfect product for studio living.

For the complete range, please refer to our separate Smartbed brochure



Solutions for compact living



Where space is at a premium John Strand presents the Convertables, a range of designer coffee tables that convert into dining tables. Simple to use and available in a choice of finishes.



John Strand can offer a range of compact kitchen solutions to suit any space. Choose from a number of styles from the basic John Strand Mini Kitchen or our Italian Designer range.



Smartbeds have products with single, double and kingsize mattress options. The wallbeds include combinations with shelves, sofa, table, desk and revolving mechanisms.

john strand

John Strand MK Ltd
12 / 22 Herga Road
Harrow, Middlesex
HA3 5AS

Telephone / 020 8930 6006
Facsimile / 020 8930 6008
enquiry@johnstrand-mk.co.uk
www.johnstrand-mk.co.uk



johnstrand

kitchens for small spaces



pricelist

September 2011

creating **space**

The famous John Strand **Mini-Kitchens**
see brochure pages 4 – 6

WITH
HOTPLATES

WITHOUT
HOTPLATES

Delivery from stock (5 – 7 working days)

MINI-KITCHEN



W:1000 D:600 H:900

MK11

£525

MK17

£480

- Steel construction with white enamel finish
- Stainless steel sink & drainer
- With or without 2 electric hotplates
- 60 minute safety timer with hotplates
- 98ltr refrigerator with 4 star freezer compartment
- Storage cupboard

MINI-KITCHEN with MICROWAVE



W:1000 D:600 H:900

MK12

£670

MK18

£625

- Steel construction with white enamel finish
- Stainless steel sink & drainer
- With or without 2 electric hotplates
- 60 minute safety timer with hotplates
- 98ltr refrigerator with 4 star freezer compartment
- 700 watt microwave

MINI-KITCHEN with MICROWAVE and PAN DRAWER



W:1000 D:600 H:900

MK19D

£715

MK20D

£670

- Steel construction with white enamel finish
- Stainless steel sink & drainer
- With or without 2 electric hotplates
- 60 minute safety timer with hotplates
- 98ltr refrigerator with 4 star freezer compartment
- 700 watt microwave
- Pan drawer below microwave

Kitchenettes see brochure page 8

KITCHENETTE



W:1000 D:600 H:2000

KMK11

£630

KMK17

£585

- Steel construction with white enamel finish
- Stainless steel sink & drainer
- With or without 2 electric hotplates
- 60 minute safety timer with hotplates
- 98ltr refrigerator with 4 star freezer compartment
- Storage cupboard
- 1000 x 300 x 570mm wall unit

KITCHENETTE with MICROWAVE

W:1000 D:600 H:2000

KMK12

£775

KMK18

£730

- Steel construction with white enamel finish
- Stainless steel sink & drainer
- With or without 2 electric hotplates
- 60 minute safety timer with hotplates
- 98ltr refrigerator with 4 star freezer compartment
- 700watt microwave
- 1000 x 300 x 570mm wall unit

KITCHENETTE with MICROWAVE and PAN DRAWER

W:1000 D:600 H:2000

KMK19D

£820

KMK20D

£775

- Steel construction with white enamel finish
- Stainless steel sink & drainer
- With or without 2 electric hotplates
- 60 minute safety timer with hotplates
- 98ltr refrigerator with 4 star freezer compartment
- 700watt microwave
- Pan drawer below microwave
- 1000 x 300 x 570mm wall unit

- Prices are subject to change without prior notice
- All prices exclude VAT
- Delivery costs are charged according to postcode, model and quantity required
- Please refer to separate sheet for delivery charges

Galley Kitchens

see brochure page 9

GALLEY KITCHEN

W:1500 D:600 H:2000

GALLEY KITCHEN

with MICROWAVE

W:1500 D:600 H:2000

GALLEY KITCHEN

with MICROWAVE
and PAN DRAWER

W:1500 D:600 H:2000



WITH
HOTPLATES

WITHOUT
HOTPLATES

Delivery from stock (5 – 7 working days)

GMK11

GMK17

£825

£780

- Stainless steel construction with white enamel finish
- Stainless steel sink & drainer
- With or without 2 electric hotplates
- 60 minute safety timer with hotplates
- 98ltr refrigerator with 4 star freezer compartment
- Storage cupboard
- 500mm base unit & wall unit
- 1000mm wall unit

GMK12

GMK18

£970

£925

- Stainless steel construction with white enamel finish
- Stainless steel sink & drainer
- With or without 2 electric hotplates
- 60 minute safety timer with hotplates
- 98ltr refrigerator with 4 star freezer compartment
- 700 watt microwave
- 500mm base unit & wall unit
- 1000mm wall unit

GMK19D

GMK20D

£1015

£970

- Stainless steel construction with white enamel finish
- Stainless steel sink & drainer
- With or without 2 electric hotplates
- 60 minute safety timer with hotplates
- 98ltr refrigerator with 4 star freezer compartment
- 700 watt microwave
- Pan drawer below microwave
- 500mm base unit & wall unit
- 1000mm wall unit

Eye Level Micro Kitchens

see brochure page 7

Allow 3 – 4 weeks delivery

KITCHENETTE

with MICROWAVE

W:1000 D:600 H:2000



ELK11

ELK17

£715

£670

- Stainless steel construction with white enamel finish
- Stainless steel sink & drainer
- With or without 2-electric hotplates
- 60 minute safety timer with hotplates
- 98ltr refrigerator with 4 star freezer compartment
- 1000 x 360 x 570mm wall unit with single cupboard and open shelf section
- 700-watt microwave

GALLEY KITCHEN

with MICROWAVE

W:1500 D:600 H:2000



ELG11

ELG17

£915

£870

- Stainless steel construction with white enamel finish
- Stainless steel sink & drainer
- With or without 2-electric hotplates
- 60 minute safety timer with hotplates
- 98ltr refrigerator with 4 star freezer compartment
- 1000 x 360 x 570mm wall unit
- 500 x 360 x 570 mm open shelf unit
- 700-watt microwave
- 500 x 600 x 900 mm base unit & worktop

Oven Combi Kitchens

see brochure page 10

Allow 3 – 4 weeks delivery

OVEN COMBI

with MICROWAVE,
GRILL &
CONVECTION OVEN

W:1600 D:600 H:900



OCMK1

£995

- Includes MK11 Mini-Kitchen
- 600mm oven housing base unit & worktop
- Cutlery drawer
- Built-in combination Microwave, Grill and Convection Oven
- All units supplied assembled

OVEN COMBI

with WALL UNITS

W:1600 D:600 H:2000



OCMK2

£1195






- Includes MK11 Mini-Kitchen
- 600mm oven housing base unit & worktop
- Cutlery drawer
- Built-in combination Microwave, Grill and Convection Oven
- 1000mm wall unit & 600mm wall unit
- All units supplied assembled

Designer Range

Base Units Only

see brochure pages 11 – 13

Check stock availability or allow 4 – 6 weeks for delivery.

	FINISH	2 Hotplates	1 Hotplate	Without Hotplates	
1M BASE  W:1000 D:600 H:900	Finish Group 1 Group 2 Group 3	ETN1021 £685 £840 £885		ETN1023 £640 £795 £840	<ul style="list-style-type: none"> White laminate carcass Stainless steel sink & drainer 85ltr integrated refrigerator with ice box Storage cupboard With or without electric hotplates 60 minute safety timer with hotplates
1M BASE with DRAWER  W:1000 D:600 H:900	Finish Group 1 Group 2 Group 3	ETN1041 £700 £855 £900		ETN1043 £655 £810 £855	<ul style="list-style-type: none"> White laminate carcass Stainless steel sink & drainer 70ltr integrated refrigerator with ice box Storage cupboard Cutlery drawer With or without electric hotplates 60 minute safety timer with hotplates
1.2M BASE  W:1200 D:600 H:900	Finish Group 1 Group 2 Group 3	ETN1221 £725 £875 £920		ETN1223 £675 £825 £870	<ul style="list-style-type: none"> White laminate carcass 1 1/2 bowl Stainless steel sink & drainer 85ltr integrated refrigerator with ice box Storage cupboard With or without electric hotplates 60 minute safety timer with hotplates Ceramic hob – Additional cost of £125 only available on ETN1221 (use code ETN1224)
1.2M BASE with DRAWER  W:1200 D:600 H:900	Finish Group 1 Group 2 Group 3	ETN1241 £740 £890 £935		ETN1243 £690 £840 £855	<ul style="list-style-type: none"> White laminate carcass 1 1/2 bowl Stainless steel sink & drainer 70ltr integrated refrigerator with ice box Storage cupboard Cutlery drawer With or without electric hotplates 60 minute safety timer with hotplates
600MM BASE with DRAWER  W:600 D:600 H:900	Finish Group 1 Group 2 Group 3	ETN641 £635 £695 £715	ETN642 £620 £680 £700	ETN643 £595 £655 £675	<ul style="list-style-type: none"> White laminate carcass Stainless steel sink top 70ltr refrigerator with ice box With or without electric hotplates 60-minute safety timer with hotplates Drawer above fridge Left or right hand hinged door

Please refer to page 18 of colour brochure for Group finishes.

- Prices are subject to change without prior notice
- All prices exclude VAT
- Delivery costs are charged according to postcode, model and quantity required
- Please refer to separate sheet for delivery charges
- ETN1221 model is also available with a single bowl

Designer Range

Kitchens

see brochure pages 11 – 13

FINISH	2 Hotplates with 85ltr fridge	2 Hotplates with 70ltr fridge & drawer	Without Hotplates with 85ltr fridge	Without Hotplates with 70ltr fridge & drawer
--------	-------------------------------	--	-------------------------------------	--

Allow 4 – 6 weeks for delivery.

KITCHENETTE

W:1000 D:600 H:2000



Finish	DK021	DK041	DK023	DK043
Group 1	£805	£820	£755	£775
Group 2	£965	£980	£915	£935
Group 3*	£1035	£1050	£985	£1005

- White laminate carcass
- Stainless steel sink & drainer
- 85ltr refrigerator with ice box
- Storage cupboard
- With or without electric hotplates
- 60-minute safety timer with hotplates
- 1000 x 300 x 570 mm wall unit

KITCHENETTE with MICROWAVE

W:1000 D:600 H:2000



Finish	DKM021	DKM041	DKM023	DKM043
Group 1	£860	£880	£810	£820
Group 2	£990	£1010	£945	£960
Group 3*	£1040	£1060	£995	£1015

- White laminate carcass
- Stainless steel sink & drainer
- 85ltr refrigerator with ice box
- Storage cupboard
- With or without electric hotplates
- 60-minute safety timer with hotplates
- 1000 x 360 x 570mm wall unit with single cupboard & open shelf section
- 700-watt compact microwave

GALLEY KITCHEN

W:1500 D:600 H:2000



Finish	DG021	DG041	DG023	DG043
Group 1	£1120	£1140	£1075	£1095
Group 2	£1295	£1315	£1250	£1270
Group 3*	£1395	£1415	£1350	£1370

- White laminate carcass
- Stainless steel sink & drainer
- 85ltr refrigerator with ice box
- Storage cupboard
- With or without electric hotplates
- 60-minute safety timer with hotplates
- 1000 x 300 x 570 mm wall unit
- 500 x 300 x 570 mm wall unit
- 500 x 600 x 900 mm base unit with drawer and worktop

GALLEY KITCHEN with MICROWAVE

W:1500 D:600 H:2000



Finish	DGM021	DGM041	DGM023	DGM043
Group 1	£1195	£1215	£1150	£1170
Group 2	£1350	£1370	£1305	£1325
Group 3*	£1450	£1470	£1405	£1425

* Additional cost for stainless steel longbar handles @ £11.00

- White laminate carcass
- Stainless steel sink & drainer
- 85ltr refrigerator with ice box
- Storage cupboard
- With or without electric hotplates
- 60-minute safety timer with hotplates
- 1000 x 360 x 570 mm wall unit
- 500 x 360 x 570 mm open shelf unit
- 700-watt compact microwave
- 500 x 600 x 900 mm base unit with drawer and worktop

OVEN COMBI KITCHEN

W:1600 D:600 H:2000



Finish	DOC021	DOC041	DOC023	DOC043
Group 1	£1450	£1470	£1410	£1430
Group 2	£1595	£1615	£1555	£1575
Group 3*	£1675	£1695	£1635	£1655

- White laminate carcass
- Stainless steel sink & drainer
- 85ltr refrigerator with ice box
- Storage cupboard
- With or without electric hotplates
- 60-minute safety timer with hotplates
- 1000 x 300 x 570 mm wall unit
- 600 x 300 x 570 mm wall unit
- 600 x 600 x 900 mm base oven housing unit with drawer & worktop
- Combination microwave, grill & convection oven






Please refer to page 18 of colour brochure for Group finishes.

- 1200mm wide Designer Range base units can also be used to create Kitchenettes, Galley & Oven Combi Kitchens

Hideaway Mini-Kitchens

see brochure pages 14 – 17

Check stock availability or allow 4 – 6 weeks for delivery.

	FINISH	2 Hotplates	1 Hotplate	Without Hotplates	
1M HIDEAWAY with MICROWAVE  W:1000 D:620 H:2100	Finish	HA05		HA03	<ul style="list-style-type: none"> • White laminate carcass • Stainless steel sink & drainer • 85ltr integrated refrigerator with ice box • Storage cupboard • With or without electric hotplates • 60 minute safety timer with hotplates • Top unit with shelving, light & socket • 700-watt compact microwave • Door activated switch with cut-out to hotplates
	Group 1	£1150		£1100	
	Group 2	£1395		£1345	
	Group 3	£1495		£1445	
1M HIDEAWAY with MICROWAVE and DRAWER  W:1000 D:620 H:2100	Finish	HA07		HA09	<ul style="list-style-type: none"> • White laminate carcass • Stainless steel sink & drainer • 70ltr refrigerator with ice box • Storage cupboard & drawer • With or without electric hotplates • 60 minute safety timer with hotplates • Top unit with shelving, light & socket • 700-watt compact microwave • Door activated switch with cut-out to hotplates
	Group 1	£1190		£1140	
	Group 2	£1415		£1365	
	Group 3	£1515		£1465	
1.2M HIDEAWAY with MICROWAVE  W:1200 D:620 H:2100	Finish	HA06		HA04	<ul style="list-style-type: none"> • White laminate carcass • 1 1/2 bowl Stainless steel sink & drainer • 85ltr integrated refrigerator with ice box • Storage cupboard • With or without electric hotplates • 60 minute safety timer with hotplates • 700-watt compact microwave • Top unit with shelving, light & socket • Ceramic hob – Additional cost of £125 only available on HA06 (use code HA06 C)
	Group 1	£1215		£1165	
	Group 2	£1470		£1420	
	Group 3	£1575		£1525	
1.2M HIDEAWAY with MICROWAVE and DRAWER  W:1200 D:620 H:2100	Finish	HA08		HA10	<ul style="list-style-type: none"> • White laminate carcass • 1 1/2 bowl Stainless steel sink & drainer • 70ltr integrated refrigerator with ice box • Storage cupboard & drawer • With or without electric hotplates • 60 minute safety timer with hotplates • Top unit with shelving, light & socket • 700-watt compact microwave • Door activated switch with cut-out to hotplates
	Group 1	£1255		£1205	
	Group 2	£1510		£1460	
	Group 3	£1615		£1565	
600MM HIDEAWAY with MICROWAVE and DRAWER  W:600 D:620 H:2100	Finish	HA014	HA015	HA016	<ul style="list-style-type: none"> • White laminate carcass • Stainless steel sinktop • 70ltr integrated refrigerator with ice-box • With or without electric hotplates • 60 minute safety timer with hotplates • Drawer above fridge • Left or right hand hinged door • Top unit with shelving, light & socket • 700-watt compact microwave • Door activated switch with cut-out to hotplates
	Group 1	£995	£975	£950	
	Group 2	£1195	£1175	£1150	
	Group 3	£1255	£1235	£1210	

Please refer to page 18 of colour brochure for Group finishes.

- Prices are subject to change without prior notice
- All prices exclude VAT
- Delivery costs are charged according to postcode, model and quantity required
- Please refer to separate sheet for delivery charges

Hideaway Mini-Kitchens

Additional Items

see brochure pages 14 – 19

TALL STORAGE UNIT



W:400/500/600 x D:620 x H:2100

FINISH	400 WIDE	500 WIDE	600 WIDE
Finish	LSK40	LSK50	LSK60
Group 1	£290	£300	£310
Group 2	£305	£315	£325
Group 3	£355	£365	£375

- White laminate carcass
- Fitted with shelves
- Left or right hand hinged doors
- Available as a wardrobe with hanging rail
- LSK60 can be used to house a microwave, compact dishwasher or washing machine

TALL SIDE PANEL

W:600 x D:18 x H:2100

Finish	HSF		
Group 2	£85		
Group 3	£95		

- Finished 'Plant on' side panel to match doors

SPLASH BACK

Finish	SSB10	SSB12	
Stainless steel	£120	£145	

- Stainless steel sheet splashback for 1000mm & 1200mm wide top units

Backboards for Kitchenettes, Galley & Oven Combi Kitchens see brochure page 18

BACKBOARDS



W:1000/1500/1600 x H:530

Finish	BB10 1000 x 530	BB15 1500 x 530	BB16 1600 x 530
Jamocha Granite Effect & Brushed Aluminium Laminate	£80	£115	£125
Stainless Steel	£120	£225	£240

- Alternative to wall tiles
- Suitable for wet areas
- Laminate or Stainless Steel finish
- Side panels available on request in brushed aluminium laminate effect finish
BASP06 600 x 530 @ £50

Worktops for Galley & Oven Combi Kitchens see brochure page 18

WORKTOPS



Finish	Galley 500 x 600 Included	Oven Combi 600 x 600 Included
White		
Blocked Beech, Brushed Aluminium Laminate & Granite Effect	£25	£35
Stainless Steel	£115	£135

- Latest technology laminate
- 30mm postformed edge
- Moisture and Heat resistant
- Stainless steel option

Taps see brochure page 19

DCM104



- Chrome monobloc mixer tap
- Chrome metal heads
- Swivelling spout

£42

CRU



- Chrome monobloc mixer tap
- 1/4 turn ceramic disc
- Swivelling spout

£52

DLT104



- Chrome monobloc mixer tap
- 3" levers for easy use
- 1/4 turn ceramic disc
- Swivelling spout

£95

SL5/CH



- Chrome monobloc mixer tap
- Single lever action
- Swivelling spout

£30

CB



- Wooden chopping board for Electrolux mini-kitchens
- Fits over single bowl

£48

Water Heaters & Boiling Water Units see brochure page 19

WHVT



W:290 D:178 H:477

- Vented undersink water heater
- 7 litre capacity
- 3kw rating
- Fast heat up
- Chrome monobloc vented tap

£295

RP1



W:307 D:74 H:160

- Instantaneous undersink water heater
- 9.5kw multi point
- 40 amp fuse rating
- Can be used with any monobloc tap
- Compact size

£195

PBW



W:230 D:138 H:298

- Boiling water unit
- Ideal for making tea, coffee instant soups etc
- 2.4 kw rating/2.0 litre capacity
- Larger capacity models available
- 3 year on-site warranty

£565

BP1



- Instant boiling water for Tea, coffee etc
- Chrome executive tap
- Unit & filter fits under sink
- Refills & re-boils automatically
- Standard 13 amp socket
- Easy fit

£450

Washing Machine, Dishwasher & Microwave Options see brochure page 19

(Microwave options not available for mini-kitchens on brochure pages 5,6,8 and 9)

CWM



W:495 D:515 H:670

- Compact washing machine
- 1300 rpm
- 3kg wash
- Super rinse

£475

CDW



W:545 D:480 H:447

- Compact Dishwasher
- 6 place settings
- 2 temperatures
- 5 programmes
- Cold water fill

£325

R27STM



W:460 D:380 H:275

- Compact Microwave
- 800 watt output
- 22 litre interior
- Express cook feature
- Stainless steel exterior

£90

CM554W / CM579S



W:510 D:390 H:304

- Slimline Combination microwave, convection oven & grill
- 27 litre capacity
- 6 power levels
- 1000 watt output
- 1300 watt grill
- Convection 100-220°C

CM554W £175 - White finish

CM579S £235 - Stainless Steel finish

Italian Hideaways

see brochure pages 20 – 22

- Accessories such as utensil rails, halogen lights & chopping board are at additional cost
- These kitchens are available without hotplates, but with either a s/steel or laminate worktop

- Allow 6-8 weeks for delivery
- The Italian Hideaway Kitchen is supplied partly with assembled units & partly with flat pack sections



W:1256 D:602 H:1980

ITH320

£2175

- Matching carcase, backboard & doors
- Stainless steel sink & drainer
- Single lever monobloc tap
- Rear & side upstands
- Sink base with internal drawer
- Plate rack/drainer
- Bi-fold doors
- 2 plate electric hob
- Integrated refrigerator
- Recirculating or ducted extractor



W:1706 D:602 H:1980

ITH460

£2675

- Matching carcase, backboard & doors
- Stainless steel sink & drainer
- Single lever monobloc tap
- Rear & side upstands
- Sink base with internal drawer
- Plate rack/drainer
- Bi-fold doors
- **450mm base unit**
- 450mm open shelf unit
- 2 or 4 plate electric hob
- Integrated refrigerator
- Recirculating or ducted extractor



W:1706 D:602 H:1980

ITH580

£2995

- Matching carcase, backboard & doors
- Stainless steel sink & drainer
- Single lever monobloc tap
- Rear & side upstands
- Sink base with internal drawer
- Plate rack/drainer
- Bi-fold doors
- **450mm integrated dishwasher**
- 450mm open shelf unit
- 2 or 4 plate electric hob
- Integrated refrigerator
- Recirc/ducted extractor



W:1706 D:602 H:1980

ITH570

£2995

- Matching carcase, backboard & doors
- Stainless steel sink & drainer
- Single lever monobloc tap
- Rear & side upstands
- Sink base with internal drawer
- Plate rack/drainer
- Bi-fold doors
- **450mm multi-function oven**
- 450mm open shelf unit
- 2 or 4 plate electric hob
- Integrated refrigerator
- Recirculating or ducted extractor

Italian Contemporary Kitchens

see brochure pages 23 – 25

These kitchens are part of a multi-system and are therefore available in a wide range of finishes and sizes.

(Grey Kitchen)



W:1800 D:600 H:2430

ITK1

£1995

brochure page 23

- Stainless steel sink & drainer
- Single lever monobloc tap
- 600mm sink base unit
- 600mm hob base unit
- 1800 x 600 x 40 laminate worktop
- 600mm tall wall unit with plate rack
- 600mm tall wall unit
- 600mm extractor wall unit
- 2 or 4 plate electric hob
- Integrated refrigerator
- Recirculating or ducted extractor

(Blue Kitchen)



W:2400 D:600 H:2190

ITK2

£2650

brochure page 23

- Stainless steel sink & drainer
- Single lever monobloc tap
- 600mm sink base unit
- 600mm oven housing unit
- 600mm drawer unit
- 2400 x 600 x 40 laminate worktop
- 600mm wall unit with plate rack
- 2 No. 600mm wall units
- 600mm extractor wall unit
- 4 plate electric hob
- Single multi-function oven
- Integrated refrigerator
- Recirculating or ducted extractor

(White Kitchen)



W:2400 D:600 H:2190

ITK3

£2225

brochure page 25

- Stainless steel sink & drainer
- Single lever monobloc tap
- 600mm sink base unit
- 600mm hob base unit
- 600mm drawer unit
- 2400 x 600 x 40 laminate worktop
- 600mm wall unit with plate rack
- 2 No. 600mm wall units
- 600mm extractor wall unit
- 4 plate electric hob
- Integrated refrigerator
- Recirculating or ducted extractor

Kitchens for wheelchair use



W:1000 D:600
x adjustable height

FINISH	2 Hotplates	Without Hotplates
Finish	ETN1081	ETN1083
Group 1	£445	£400
Group 2	£495	£450
Group 3	£510	£465

Check stock availability or allow 4 – 6 weeks for delivery.

- White laminate carcass
- Stainless steel sink & drainer
- With or without electric hotplates
- 60-minute safety timer with hotplates
- Cutlery drawer
- Wall hung adjustable brackets



W:1200 D:600
x adjustable height

Finish	ETN1281	ETN1283
Group 1	£475	£430
Group 2	£525	£480
Group 3	£540	£495

- White laminate carcass
- 1 1/2 bowl stainless steel sink & drainer
- With or without electric hotplates
- 60-minute safety timer with hotplates
- Cutlery drawer
- Wall hung adjustable brackets

Solutions for compact living



Folding Tables

“Where space is at a premium John Strand MK presents, the Convertables, a range of designer coffee table that convert into dining tables. Simple to use and available in a choice of finishes.



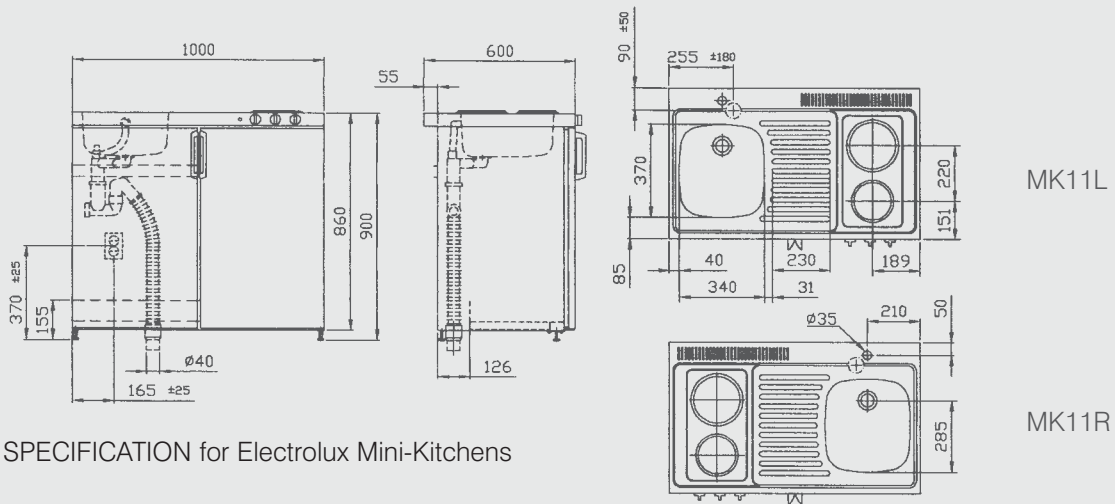
Smartbeds

Smartbeds have products with single, double & king-size mattress options. The wallbeds include combinations with shelves sofa, table, desk & revolving mechanisms.

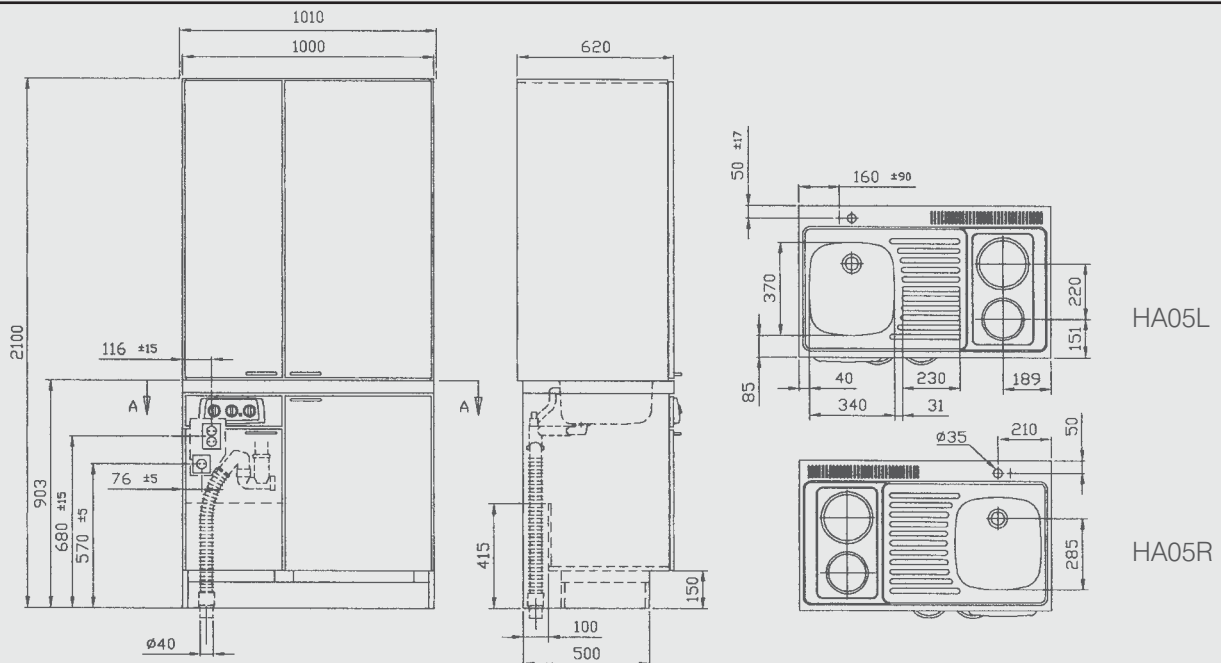


Kitchoo

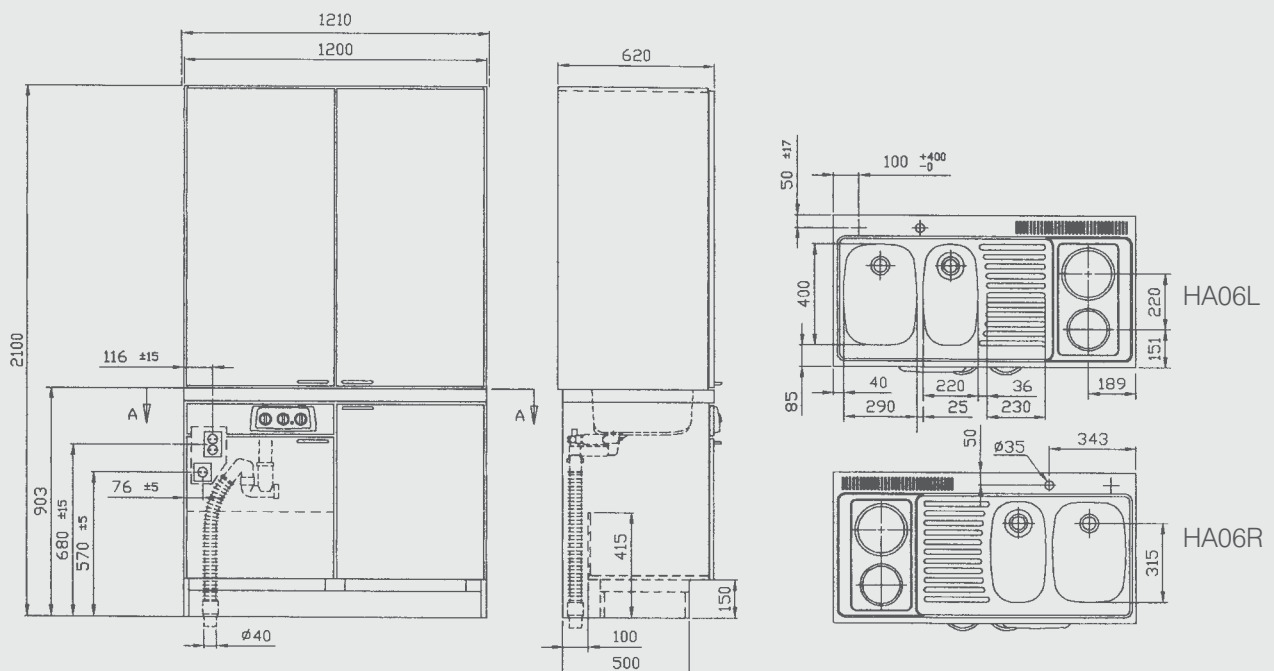
John Strand MK is delighted to announce the arrival of Kitchoo; a luxury small kitchen range that combine ingenuity, beautiful design and excellent ecological credentials. www.kitchoo.com”



GENERAL SPECIFICATION for Electrolux Mini-Kitchens



GENERAL SPECIFICATION for 1m wide Electrolux Hideaway Kitchens (illustrated with hotplates)



GENERAL SPECIFICATION for 1.2m wide Electrolux Hideaway Kitchens (illustrated with hotplates)

TECHNICAL DATA FOR MINI-KITCHENS

SINKTOP

All Stainless steel construction
35mm cut out for monobloc tap
Complete with waste, trap & overflow fittings for 40mm connection
Specify Left or Right hand bowl

ELECTRICAL DATA

Voltage 230 – 240V / 50Hz / 13A
Total wattage incl. refrigerator 2300W
The Mini-kitchen is supplied with two electrical leads with earthed plugs for the hotplates and refrigerator
Connect to a single phase 13A supply
We recommend one socket per appliance

REFRIGERATORS

Mini-kitchens
98ltr with 4 star freezer - 100W
Hideaway Mini-kitchens
85ltr capacity with icebox - 95W
or 70ltr capacity with icebox - 95W

HOTPLATES

145 dia. 1000W
180 dia. 1200W
Operated by a 60 minute timer
with automatic cut-out

MICROWAVES

(All models except Oven Combi)
Compact Microwave 700W output
20 ltr capacity 5 power levels
Combination Microwave
(Oven Combi Kitchens)
900W output 26 ltr capacity
1850W Quartz grill
Convection oven (40-250 C)

BASE AND WALL UNITS

Units are supplied flatpacked
Matt white melamine finish
18mm carcass, 90 hinges, 'D' handles
40mm postformed worktop
Wall units 500w / 1000w x 300d x 570h
Base unit 500w x 600d x 900h

18mm carcass for Designer and Oven Combi Kitchens.
All supplied assembled

INSTALLATION

The Mini-Kitchen should be installed so that it can be pulled forward from the wall to allow for servicing access.
Waste and water supplies should be positioned on the side of the sink as access behind the refrigerator is limited.

The Mini-Kitchen complies with requirements of the following EU directives:

- 73/23/EEC, dated 19.02.1973 – low voltage directive
- 89/336/EEC, dated 03.05.1989 (incl. amendment)
- 92/31/EEC) directive on electromagnetic compatibility

Appliances are covered by the Manufacturers Guarantee.

We reserve the right to change the specification without prior notice. If a particular point is critical to you please check before you purchase.

E & OE

JOHN STRAND (MK) LTD CONDITIONS OF TRADE

1. GENERAL

In these conditions:
"Seller" means John Strand (MK) Ltd.
"Buyer" means the person, firm or company who places an order with the Seller for the manufacture and/or supply of any goods

2. ACCEPTANCE

Orders are subject to these Conditions of Trade. Any different conditions on the Buyer's document will only apply if the Seller agrees in writing.

3. TERMS

Payment for goods must be made before delivery. Where customers have approved accounts, these are due for settlement 30 days from the date of invoice. Accounts are payable strictly nett.

4. PRICES

Unless otherwise agreed by the Seller in writing, quotations are held open for acceptance for a period of 12 weeks from the date they are issued. The prices charged will be the prices supplied by the Seller and are exclusive of VAT.

5. DELIVERY PERIOD

Time of delivery will not be of the essence of the contract. The period quoted for delivery commences on the date the order is acknowledged but is an estimate only. While the Seller will use all reasonable commercial endeavours to deliver the goods by the date specified, the Seller will not be liable in any way for unforeseen delays.

6. LOSS OR DAMAGE IN TRANSIT

Any damages or shortages must be reported to the Seller within 3 working days and the Delivery Note must be marked 'Damaged or Goods Missing'. Otherwise it will be deemed that the goods have been received 'Complete' and in 'Good Condition'.

7. RISK

The risk in the goods will pass to the Buyer on delivery and in the event of the goods being later lost or destroyed by fire or burglary or due to any other mishap or accident the Buyer will still be responsible to the Seller for payment.

8. DEFECTIVE MATERIALS AND GOODS

The Buyer will have the benefit of and be subject to such product guarantees of quality as the Seller may from time to time provide in respect of goods manufactured and/or supplied by the Seller and the Buyer is deemed to have full knowledge of the terms of such guarantees. Copies of the guarantees will be supplied by the Seller on request. The seller makes no other representations or warranties in relation to the goods other than those contained in the guarantees.

Subject to the provisions of such guarantees and to the extent that is permitted by law, the Seller excludes its liability for any loss or damage suffered by the Buyer in connection with the goods or their use.

9. ALTERATION TO DESIGN AND SPECIFICATION

The Seller reserves the right to alter, modify or improve the design or specification of any goods without notification.

10. CANCELLATION OF ORDERS

We regret that the Seller is unable to accept cancellation of orders for goods manufactured to customer's special requirements unless first agreed by the Seller in writing. All other cancellations will be subject to a 25% charge against the cost of the goods ordered for re-stocking. Additional delivery and collection charges will apply.

11. OWNERSHIP

The legal ownership of all goods ordered will remain with the Seller until full payment has been received from the Buyer.

C A L L

0 2 0 8 9 3 0 6 0 0 6

F A X

0 2 0 8 9 3 0 6 0 0 8

John Strand MK Ltd Delivery Charges

ZONE	POSTCODE	MINI-KITCHENS KITCHENETTES GALLEY KITCHENS TABLES	EYE LEVEL KITCHENS, OVEN COMBI KITCHENS, ALL DESIGNER RANGE KITCHENS, ITALIAN KITCHENS, HIDEAWAY KITCHENS, TALL STORAGE UNITS & SMARTBEDS
1	AL,B,BB,BD,BL,BR,CB,CH,CR,CV,CW,DA,DE, DN,DY,EN,GL,GU,HA,HD,HP,HR,HX,IG,KT,L,LE, LN 1- 3, LN5 & 6,LS,LU,M,MK,NG,NN,OL,OX, PE1-19, PE26 & 29,PR,RG,RH, RM,S,SG, SK, SL, SM,SN, ST, TF,TW,UB,WA, WD,WF,WN, WR,WS,WV	£46.00	£90.00
	BA,BH,BN,BS,CF,CM,CO,DH,DL,DT,FY,HG,HU, IP,LL1- 31, LN4, LN7-13, NE1-18, NE20-45, NE50-64, NP,NR, PE20- 25, PE30-38, PO1-29 ,SO,SP ,SR , SS ,TA, TN1-16, TN20- 22, TS, YO		
2	CT, TN17-19, TN23- 40, CA, EX, LA, NE19, NE46-49 , NE65-71, PL, SY1-2, TQ	£52.00	£95.00
3	E, EC, N, NW, SE, SW, W, WC (LONDON)	£55.00	£105.00
4	DG, EH, FK, G, KA1-26, 29+, KY, LD, LL32-77, ML, PA1- 19, SA, SY3+, TD, TR	£60.00	£100.00
5	DD, PH1-7, 14 AB30-56	£87.00	£170.00
6	KW1-14 AB10-25, IV1-3, 5, IV6-11, IV40, IV 52-54, IV57+	£95.00	£180.00
7	BELFAST CITY, BT1-18, BT36-38 DUBLIN CITY ISLE OF WIGHT PO30-41	£97.00	£180.00
8	REST OF NORTHERN IRELAND BT19-35, BT39+	£100.00	£190.00
9	PH8-13, PH15+	£105.00	£195.00
10	KW15, ZE1, HS3-9, KA27-28, PA20+	ON REQUEST	
	CHANNEL ISLANDS, GY, JE	ON REQUEST	
	HS1-2, IV41-51, IV55-56	ON REQUEST	
	ISLE OF MAN - IM	ON REQUEST	
	KW16-17, ZE2	ON REQUEST	
	REST OF REPUBLIC IRELAND	ON REQUEST	
<div> <div> <u>ADDITIONAL COST</u> REQUEST FOR AM DELIVERIES - £15.00 NEXT DAY SERVICES (WHERE POSSIBLE) - £10.00 REDUCED RATES AVAILABLE FOR MULTIPLE ORDERS </div> <div> ALL PRICES EXCLUDE VAT PRICE LIST EFFECTIVE JAN ' 12. Prices may be subject to change. </div> </div> <div> <u>DELIVERIES:</u> Please note that 'carriage' includes a doorstep delivery only. The driver (one person delivery) will not be able to move any goods inside of premises. Please ensure adequate handling is available to offload goods. </div>			